

Yacht ⁴⁵ première

THE INTERNATIONAL QUARTERLY OF 100' PLUS YACHTS

EUR 19.00 / USD 19.99 / GBP 13.50 / CHF 29.00 / CND 28.99



45

107307 510009



VERTIGE

by Tankoa Yachts with Francesco Paszkowski and Margherita Casprini

Tankoa Yachts, the Italian shipyard specialising in the production of metal motor yachts with lengths of up to 90 metres, or 295 feet, is introducing the new Vertige at the Monaco Yacht Show 2017. The vessel will be presented to the select public in attendance at the exclusive international show in a world first preview.

Vertige, bearing yard number C103 yacht Model S501 – indicating the first 50-metre hull by Tankoa Yachts – will have her high society debut in the world of luxury yachting thanks to her expert Owner of French origin, who placed an order for the construction of his new motor yacht with the Italian shipyard in February 2015.

Every phase in the construction of the S501 was carefully monitored at the shipyard by the Owner's representative, Albert McIlroy, a project manager and build engineer who over a long career has handled the construction of numerous motor yachts all over the world, particularly in Northern Europe.

Regarding the construction works for the S501, or Vertige, at the Italian shipyard's facilities, McIlroy says he was very pleased: *"With the S501, Tankoa substantially improved their deadline management and operating processes, and their Teutonic approach left me speechless, it was so unusual for an Italian yard. Having supervised the construction of a large number of yachts all over the world, I can safely say that Tankoa's pace and productivity are outstanding and it was probably the first time I've seen build timescales respected, all the while maintaining the amazing flexibility that Tankoa is beginning to be known for."*

All of this is possible thanks to the robust, tried and tested planning and organisational capabilities of the Genoa-based shipyard, which streamlines the production process in full to allow it to guarantee a high level of quality within competitive economic parameters. This is a benefit that does not just affect the initial purchase price, but also extends to the running costs of the vessel.



VERTIGE

The naval architecture of the hull has been optimised for performance by Tankoa's Technical Office, based on an initial design by Massimo Visibelli, and the yacht has been built entirely in light aluminium alloy. Together, these features allow for a substantial reduction in fuel consumption. After the launch in February this year, the S501's first sea trials fully confirmed the design estimates and went far beyond

THE FIRST
SEA TRIAL
LASTED AROUND
EIGHT HOURS AND
IT WAS SIMPLY
INCREDIBLE

the contract specifications, generating well-deserved enthusiasm among the Tankoa Yachts technical team. The contract specifications called for readings of the various performance metrics for the new S501 to be taken in the total absence of waves and at a wind speed of 5 knots. In these conditions, the

motor yacht needed to achieve a top speed of 16 knots under half load. In the first sea trial, however, the readings for the new S501's performance were taken with short waves at a height of a little above half a metre and variable wind speeds at around 25 knots, with gusts of up to 30 knots. In these conditions, the motor yacht actually achieved a top speed of 16.5 knots – and with a load well over 50% as well. *"The first sea trial for the new S501 lasted around eight hours and it was simply incredible,"* said Edoardo Ratto, General Manager of Tankoa Yachts, with understandable elation.

He went on to emphasise the point with further details: *"Vertige reached a top speed of 16.5 knots with a 60% load, consisting of 33,000 litres / 8,730 US gallons of fuel and over 20,000 litres / 5,290 US gallons of water."* Revealing further details, he continued: *"At her cruising speed of 13.5 knots, the new S501 has an autonomy range of over 5,000 nautical miles, which makes a real difference when you're crossing the Atlantic."* Mr Ratto concluded: *"On Vertige, vibrations are all but non-existent and the noise level is lower than required by the contract – all you need to know is that in both the owner's suite and the VIP stateroom, it is well below the 50 decibel threshold."*

It should also be noted that right from the first sea trial, all the tests required by international regulations were carried out, showing positive results for the new motor yacht that demonstrated considerable manoeuvrability in all situations, together with

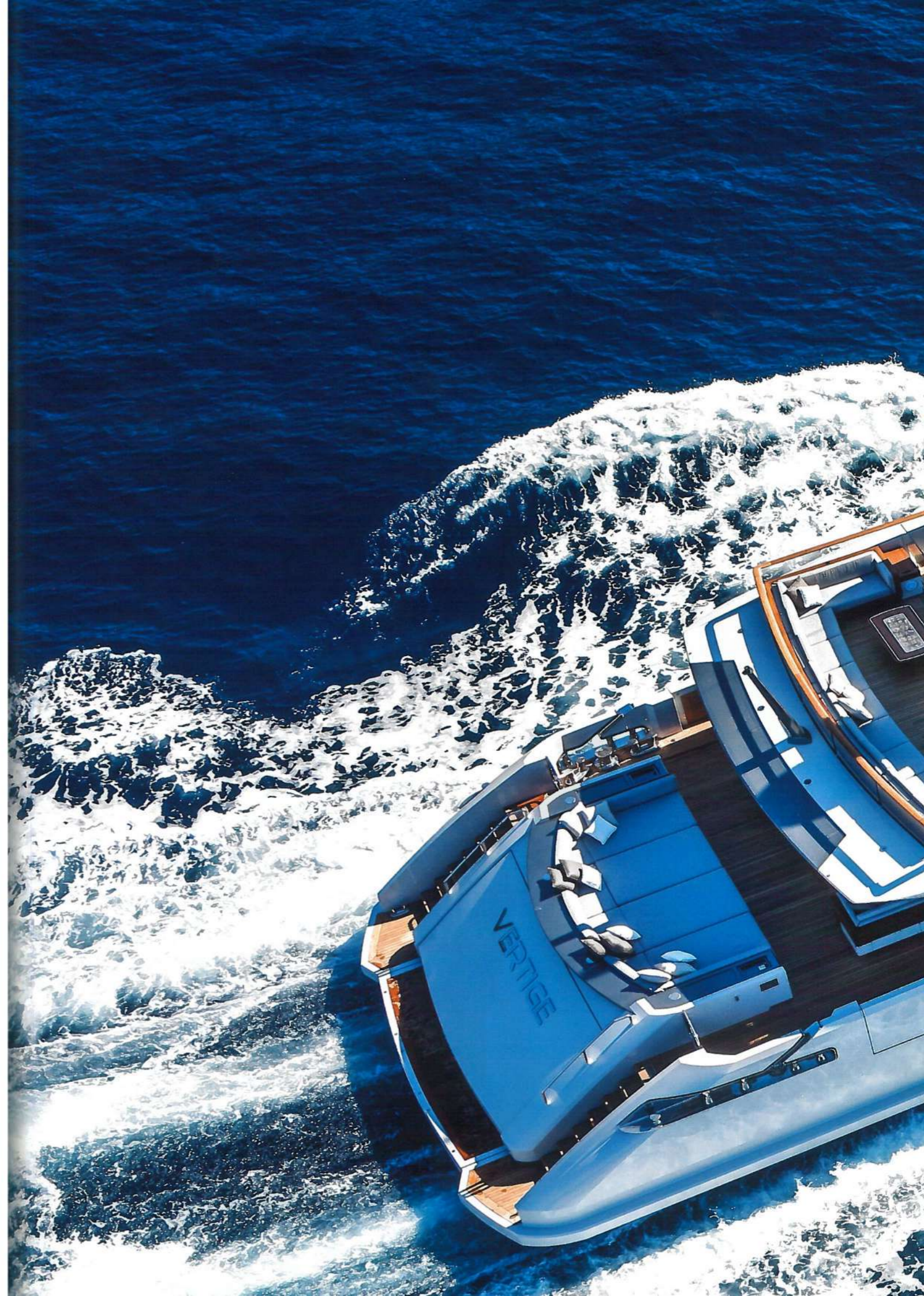
excellent stability, even with the stabiliser fin system deactivated. Once the rigorous sea trials had been completed and a very pleasing result obtained, and immediately after delivery to her Owner in May this year, Vertige then set off on an intensive charter season with a cruise in the Mediterranean, which also allowed further attractive features of the vessel to be properly highlighted. The Tankoa Yachts management team worked closely with Francesco Paszkowski in the design of the new S501. Paszkowski created the concept for the vessel, developing both the exterior design and the deck layout.

His key objective was to create a 50-metre motor yacht for the Owner while remaining below the 500 GT limit, featuring space and equipment characteristics that are normally present in much larger yachts on today's international market. For example, there are six cabins on Vertige, including the Owner's stateroom and the master stateroom, both of which are located forward on the main deck, while the two VIP staterooms and the two guest staterooms can be found amidships on the lower deck.

The Owner's suite occupies the full beam of the vessel, with two hatches on opposite sides that can be opened with an electro-hydraulic system to create two private balconies overhanging the water.

Similarly, the main deck aft also has two sections of the sides that can fold out, although in this case they are a full three metres / ten feet long, further increasing the available space beyond the already very generous allocation. This has allowed a vast sun pad to be created together with a large open-air lounge area with a bar at the entrance to the main salon. A full, uninterrupted panoramic sea view of the external environment can be enjoyed from the salon, thanks to well-considered use of lowered wall sections and floor-to-ceiling windows. The upper salon also affords a truly exceptional panoramic view, and the space is laid out as a home cinema with a bar area and a pantry that can be used to serve the alfresco dining area outside with its 14-seater table, as well as the adjacent open-air lounge area with sofas for 20 people and a disappearing television screen.

The sizes of the sunbathing area and the open-air lounge area on the fore deck are also very substantial, and these spaces have been located here to offer guests maximum privacy. ➤





IMO 1013107



VERTIGE



VERTIGE



VERTIGE







VERTIGE



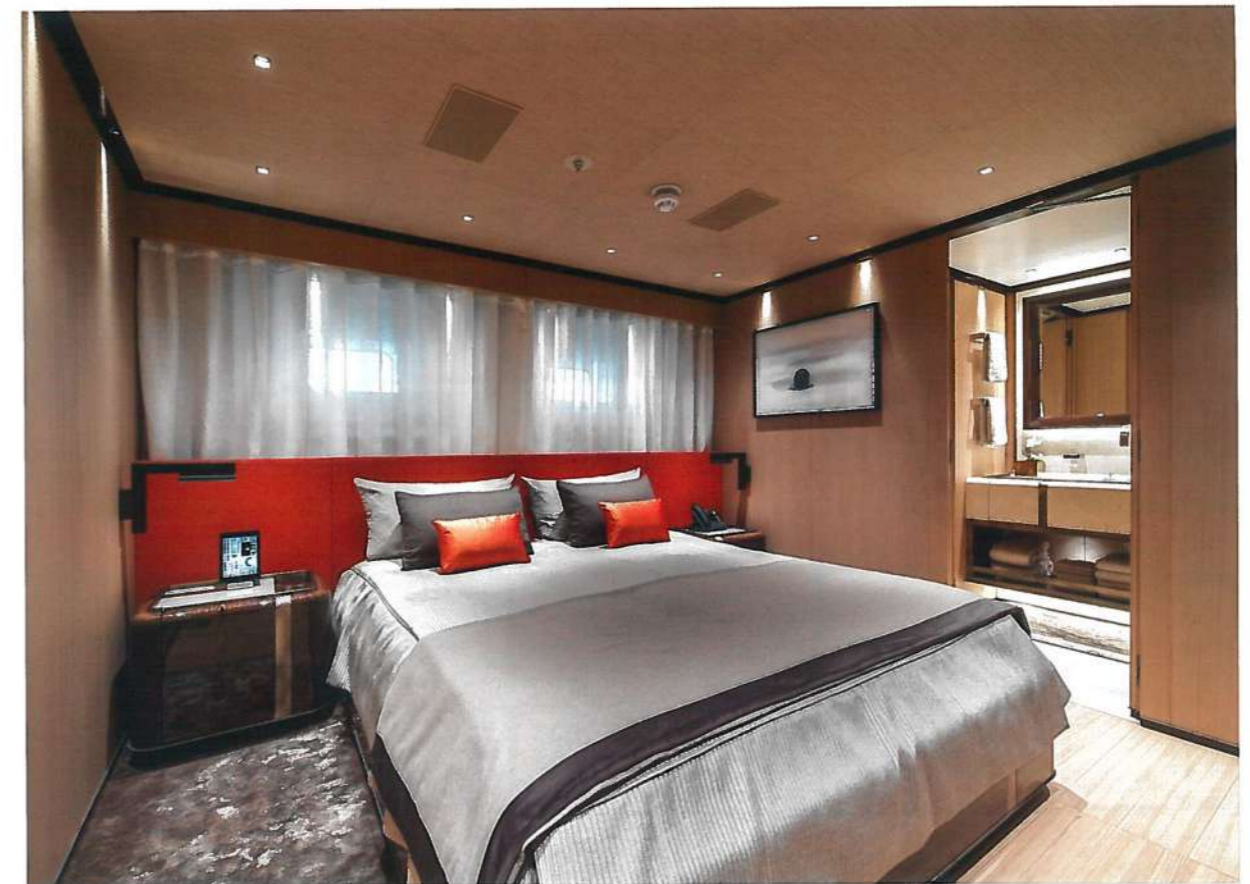


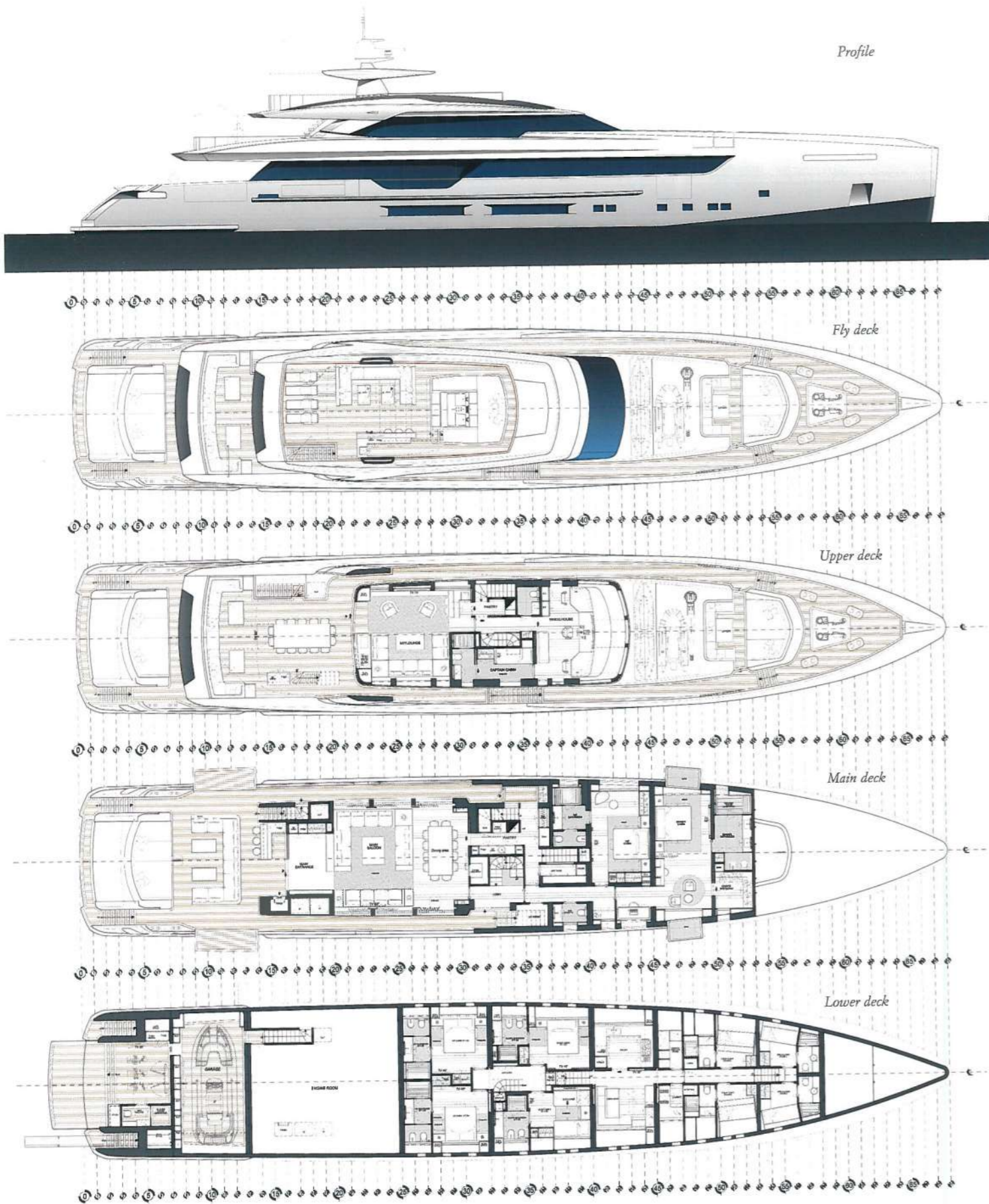
VERTIGE

However, above all – both literally and figuratively – the sizeable dimensions of the huge top deck on the S501, the sun deck, are particularly striking. In addition to offering an uninterrupted 360-degree view to the horizon, this deck features an open-air lounge and adjacent bar area, as well as two sunbathing areas, one with sun beds and the other with sun pads around a hydromassage pool. Meanwhile, at the stern on the lower deck, directly facing the water with a folding platform, there is of course a beach club with a bar area and a gym, which includes a shower cubicle and a day head. The impressive complement of spaces on board the new S501 also includes a garage and a jet ski storage area, the former to aft on the lower deck, housing the 7-metre / 23-foot main tender, and the latter located forward on the main deck, home to the rescue and service tender and a pair of jet skis.

The layout as a whole has been specifically designed to offer the best possible movement around the yacht for the Owners and guests, who can move from deck to deck and from indoors to outdoors with no interference from the crew, who have their own access routes to follow when carrying out their service activities. The exclusive fittings of Vertige's interior design are unquestionably at the high levels expected of a vessel by Tankoa Yachts, created in a welcoming, contemporary style by Francesco Paszkowski with Margherita Casprini, flawlessly in line with the Owner's desire for refined interiors infused with a "modern but warm" atmosphere. Also noteworthy is the utmost care taken with the finishes.

Flaviano Perelli
Photos by Alberto Cocchi and Olga Logvina





MAIN TECHNICAL DATA

Construction	Aluminum light alloy 5083
LOA	49.90 m / 163'71" ft
Beam (max)	9.40 m / 30'84" ft
Draft at full load	2.20 m / 7'22" ft
GRT	499
Displacement lightship	301 ton
Displacement at half load	352 ton
Displacement at full load	392 ton
Diesel tanks capacity	65,000 litres / 17,171.18 US gallons
Fresh water tanks capacity	16,600 litres / 4,385.256 US gallons
Electric Power: diesel gen-set	2 x 125 kW
Stabilizer	ZERO SPEED
Number of cabins	6
Number of beds	12
Propulsion engines	2 x kW 746 @ 1,600 rpm – MTU 8V400054R – TIER III
Bow Thruster	100 kW
TV SAT antenna	2
VSAT antenna	1
Tender	1 – 7 m
Jet sky	2
Rescue boat	1
Flag	French
Classification	Lloyd's Commercial Yachts and MCA
Exterior Design	Francesco Paszkowski Design
Interior Design	Francesco Paszkowski Design Studio / Margherita Gasprini
Shipyard	Tankoa Yachts S.p.A. www.tankoa.com info@tankoa.com