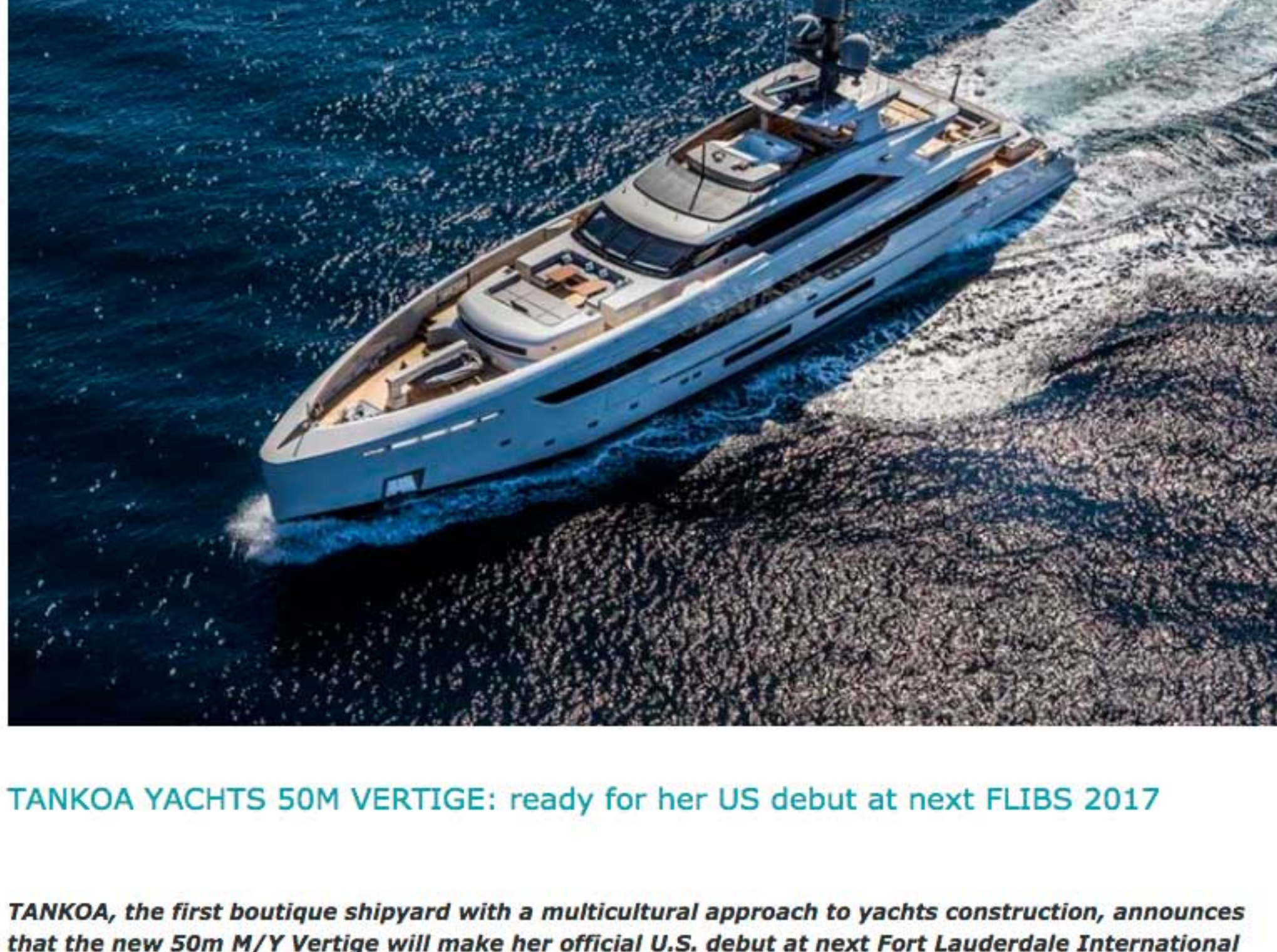


INVICTVS

◀ Previous Next ▶



TANKOA YACHTS 50M VERTIGE: ready for her US debut at next FLIBS 2017

TANKOA, the first boutique shipyard with a multicultural approach to yachts construction, announces that the new 50m M/Y Vertige will make her official U.S. debut at next Fort Lauderdale International Boat Show November 1 – 5, 2017.

M/Y Vertige – key facts

- Sale date:** February 2015
- Launch date:** February 2017
- Delivery date:** May 2017
- Concept and Exterior Design:** Francesco Paszkowski
- Interior Design:** Francesco Paszkowski in cooperation with Margherita Casprini

M/Y Vertige, the second unit of Tankoa Yachts – sold in February 2015 to an experienced French client – will make her official US debut at the next Fort Lauderdale Boat Show 2017 and will be on display at the Face Dock, the superyacht walking area – the best area of the most important US show.

Tankoa S501 Vertige represents the quintessence of the result between a high quality builder and a marketing and sales organization that is in daily contact with yacht Owners, Captains and Surveyors.



S501 M/Y VERTIGE DESIGN STATEMENT

Tankoa's management team worked in close collaboration with Francesco Paszkowski to design the project and fulfill the following set goals:

- Achieve a perfectly balanced, fluid and timeless design that will not look like what is currently offered on the market.
- Offer perfect circulation flows for owners and guests, providing them with the possibility to move from deck to deck and from inside to outside area without interfering with the working crew, while at the same time giving the crew total freedom of movement to carry on with their tasks.
- Provide a 499 gross ton package for the Owner with amenities and features commonly found on much larger yachts.
- S501 hull N°1 is a six cabins yacht that includes: main deck full beam Owner and Vip suite, two Vips and two guest cabins on the lower deck, gym, home cinema on the upper deck, a 7-meter tender garage, two jet skis and rescue tender forward. Other amenities include floor to ceiling windows, foldout hydraulic terraces in the owner's suite and on the aft deck increasing the already considerable available space...

Allowing permanent visual contact with the sea was one of the other tasks assigned to Francesco Paszkowski's design team. Interiors, as per client's request, were designed by Francesco Paszkowski Design Studio in cooperation with Margherita Casprini and reflect a "modern but warm" atmosphere.

The result will simply be one of the most beautiful 50-meter yacht ever built under 500 GRT. The level of detailing, both inside and outside, is in line with what everyone usually expects to find onboard much larger yachts.



S501 M/Y VERTIGE BUILDER STATEMENT

The Tankoa Vertige S501 is built entirely in aluminum light alloy 5083.

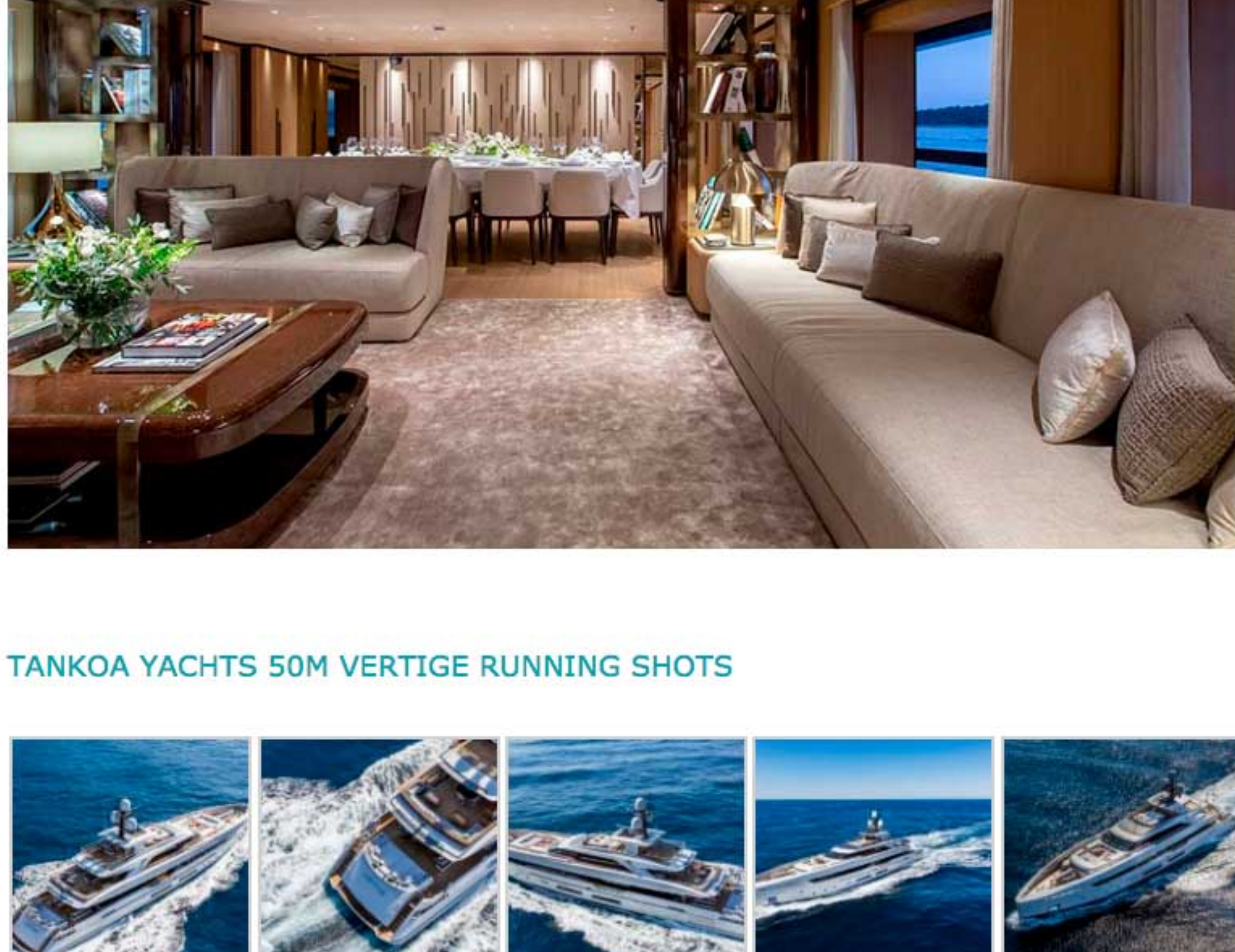
Construction has been carefully followed by the project manager and builder engineer Albert McIlroy, the owner's representative. Albert has been responsible for supervising construction of a number of yachts worldwide and mainly in Northern Europe. McIlroy recently declared – "With S501, Tankoa Yachts has greatly improved their time schedule management and operation processes and they truly have a feutonic approach that often leaves me speechless for an Italian builder. I can say, after having supervised the construction of many yachts worldwide, not only the work pace and productivity at Tankoa are superior but it is also probably the first time I see the production schedule fully respected without altering the incredible flexibility that Tankoa is becoming known for."

The above mention factor is truly a plus as the Tankoa organization and business plan, calling for only-the-best subcontractors and suppliers, comes within a package offering typical Italian styling and flexibility at a more competitive price point than our northern European colleagues.



S501, while still under the 500 GRT mark, offers spectacular layout and amenities that include:

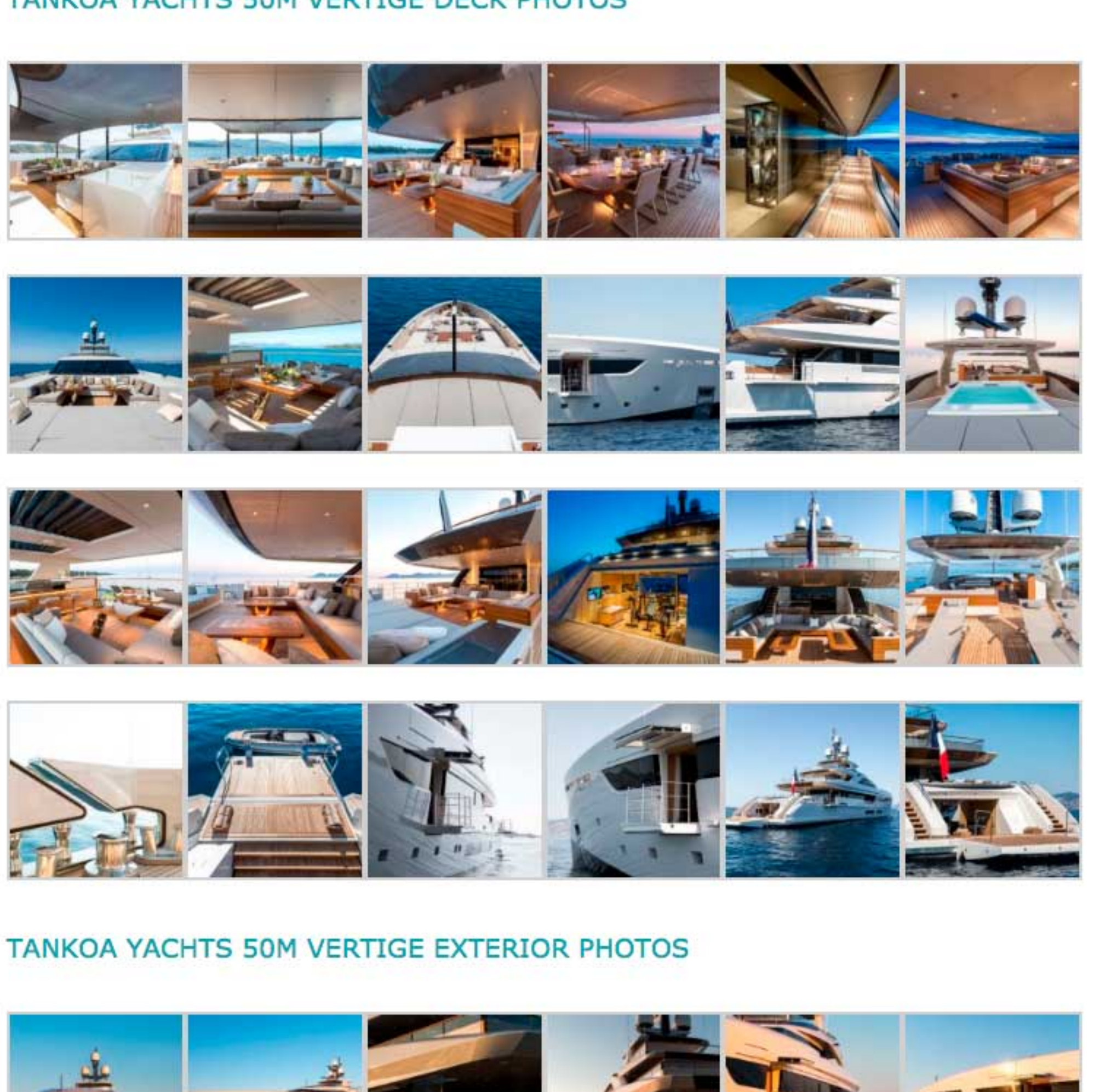
- Main deck owner's suite and master's suite. The owner's suite is equipped with two lateral foldout terraces.
- Two Vip and two guest cabins on the lower deck.
- A gigantic aft deck and fly bridge. The aft deck is equipped with an oversized sun pad, a reversed deck salon looking aft and a lateral three meter long foldout terrace to keep guests in contact with the sea.
- Floor to ceiling windows in the main salon with cut down bulwarks providing an excellent view.
- A 7m tender garage.
- Two jet skis and another service tender forward.
- Upper deck TV salon with bar.
- Upper outdoor deck with dining table for 14 guests and wrap-around sofa for up to 20 people with a foldable TV screen.
- Beach club/gym in the transom area.
- Full displacement aluminum hull to reduce both draft and fuel consumption while allowing for easy maintenance.



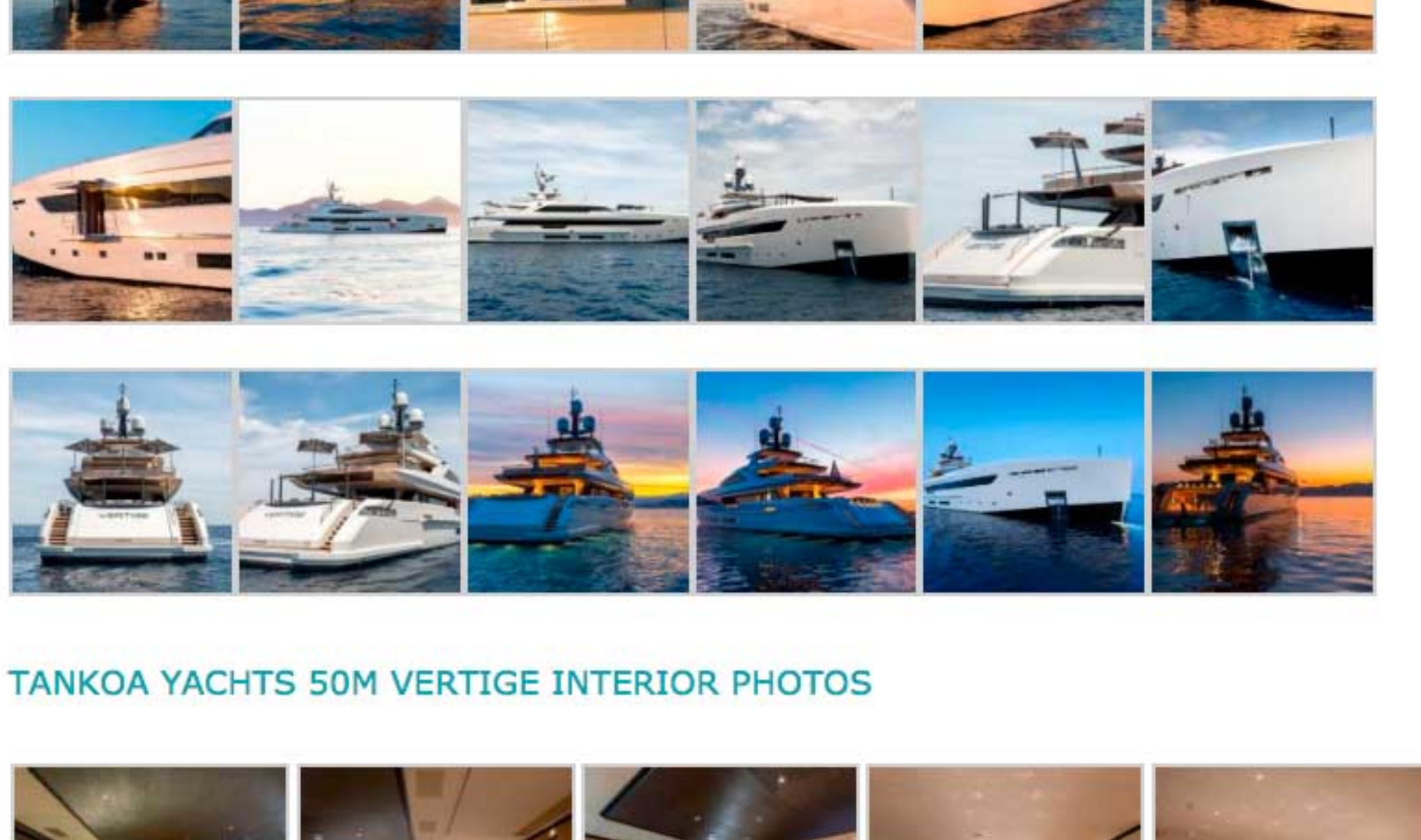
TANKOA YACHTS 50M VERTIGE RUNNING SHOTS



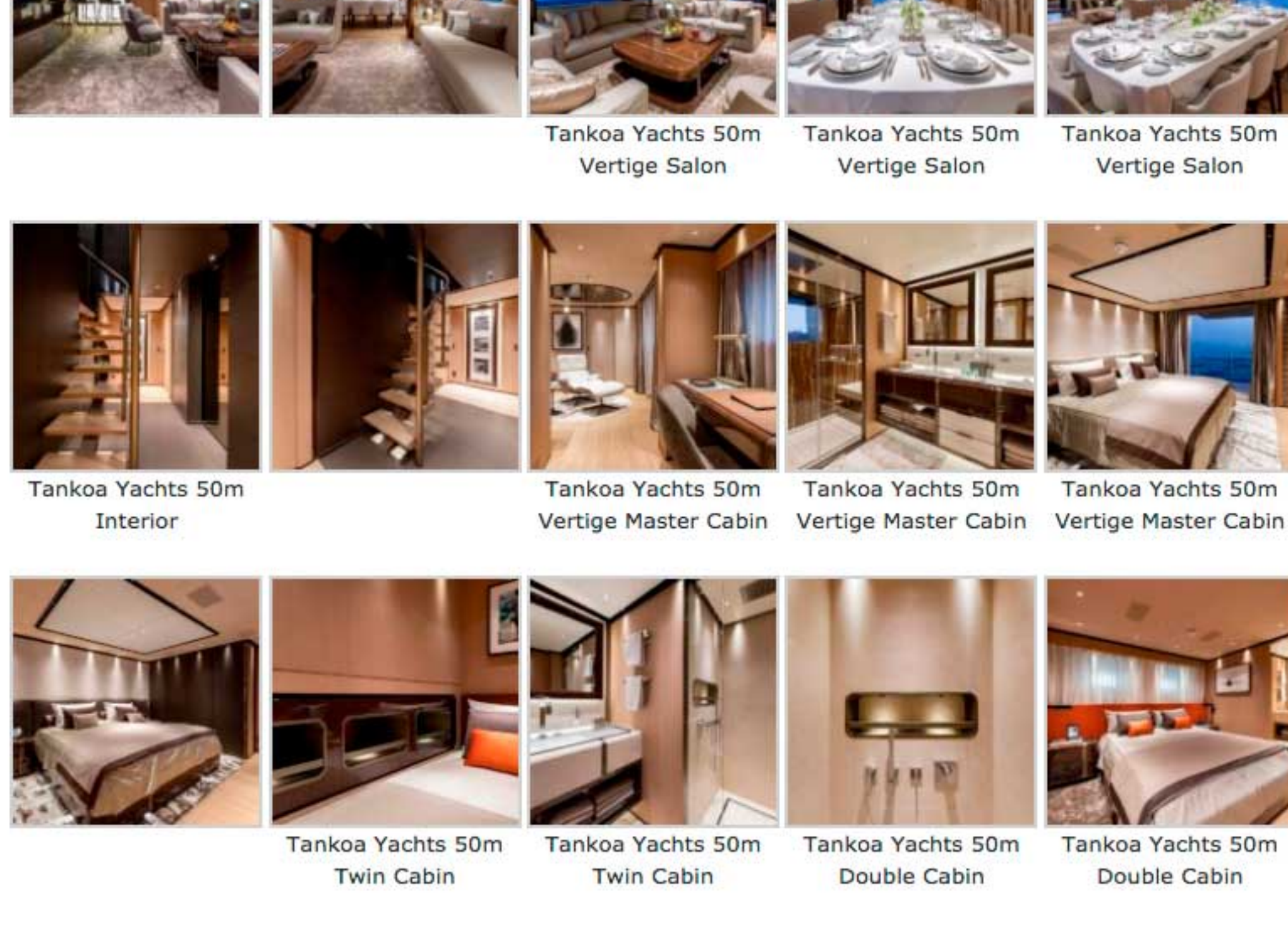
TANKOA YACHTS 50M VERTIGE DECK PHOTOS



TANKOA YACHTS 50M VERTIGE EXTERIOR PHOTOS



TANKOA YACHTS 50M VERTIGE INTERIOR PHOTOS



TANKOA YACHTS 50M VERTIGE LAYOUT



TANKOA 50M INFOGRAPHIC

S 501 Delivery - April 2017

TANKOA 50M SPECIFICATIONS

50m 499 Gross Tonnage

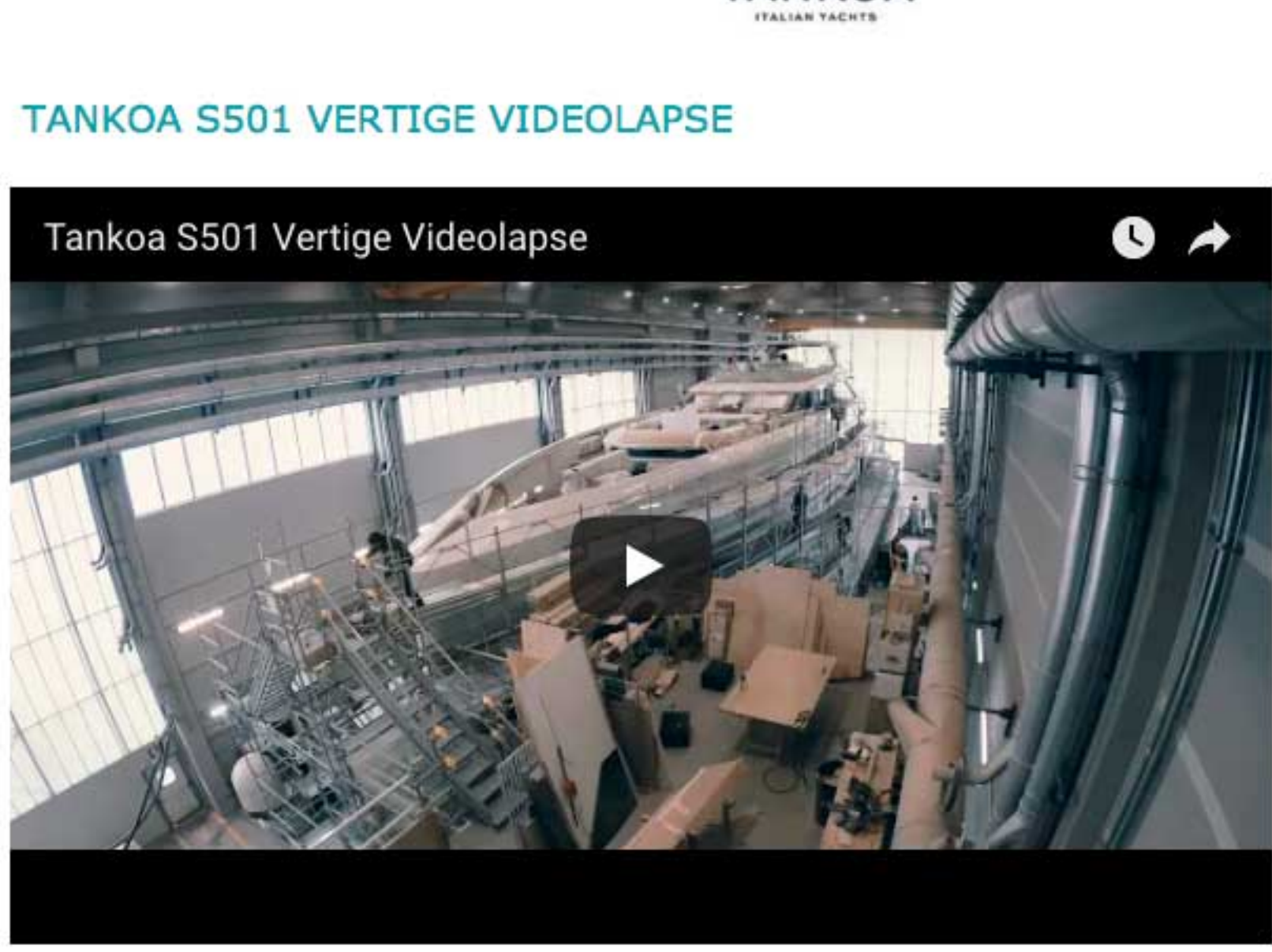
AI S501 will be entirely built in aluminum light alloy 5083

S501 Short Specifications

Length overall	49,90 m
Beam (max)	9,40 m
Draft at full load	2,20 m
Displacement lightship	301 ton
Displacement at full load	352 ton
Displacement at half load	392 ton
Fresh water tanks capacity	65,0 m ³
Propulsion engines (MTU BV400054R)	2 x kW 745 at 1.600 rpm
Maximum design speed at half load	16,0 knots
Cruise speed at half load	14,0 knots
Long range speed	12,0 knots
Electric Power - diesel gen-set	2 x 125 kW
Range at 12,0 knots	up to 5.000 n.m.



TANKOA S501 VERTIGE VIDEOLAPSE



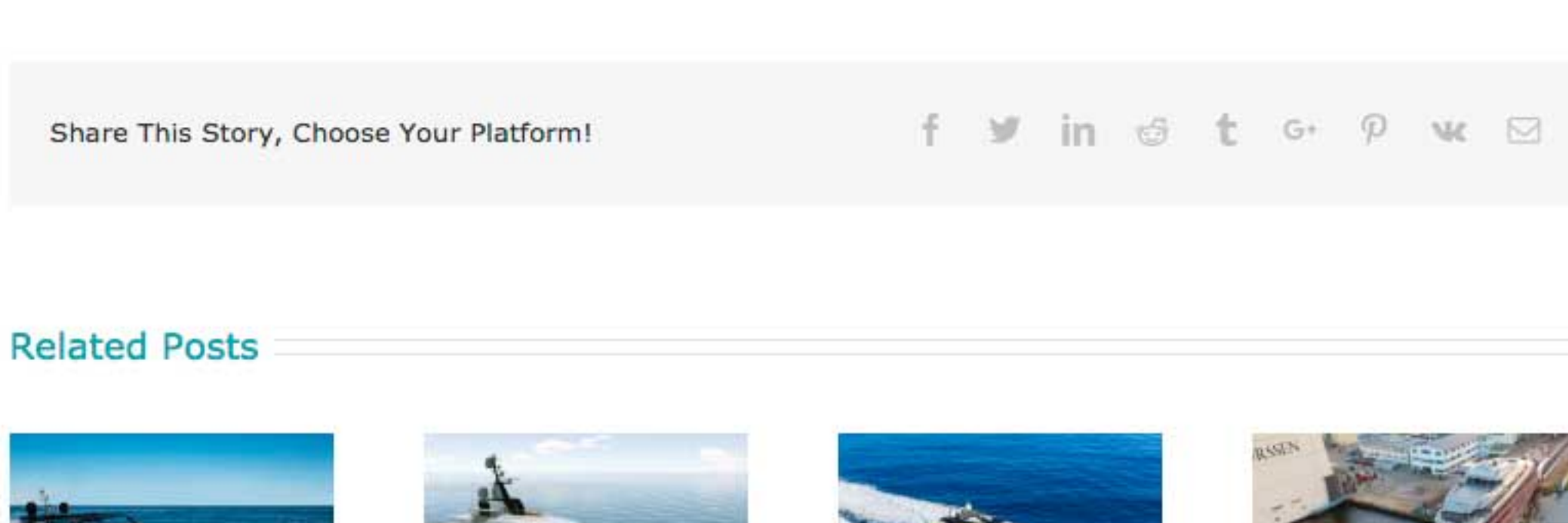
ABOUT TANKOA YACHTS

TANKOA Yachts is a project born late 2008, thanks to a very competent team of professionals involved in the yacht industry, and with a long professional history of successes. Since its inception, TANKOA Yachts' business plan is based on a new philosophy of yacht construction. "Boutique Shipyard" are the most accurate words to describe TANKOA's philosophy, a top quality shipyard focused on yachts ranging from 50 to 90 meters. Limited production, attention to details, use of the latest technologies, precision, rich specifications, ethics and emphasis of the Italian building excellence are just a few of TANKOA's values. TANKOA Yachts has opted for "a multi-cultural approach of yacht construction" by integrating various criteria. At TANKOA, the management team is proud to have successfully merged business ethics, high quality precision engineering, and Italian DNA in design and flexibility.

By Invictus Media | August 24th, 2017 | New Build | 0 Comments

Share This Story, Choose Your Platform! f t in + G+ P e

Related Posts



NEWSLETTER

ABOUT INVICTVS
The INVICTVS international network of editors, spread over five continents, ensures intelligent, in-depth reports and features. The entire editorial concept is based on the expectations of the readership, namely, yacht and jet owners. The majority of the targeted audience already has experience in these fields and therefore each boat, yacht and jet featured in the magazine has is exhaustively researched and reviewed.